



DRUM CRUSHER



DC7000 10HP Diesel

Drum Crusher DC7000-10 Diesel

The DC7000-10 Diesel is a super heavy duty drum crusher system. It is used to crush a large volume of drums continuously. The DC7000-10 Diesel has all the options in a drum crusher that you will need or find. The DC7000-10 Diesel can and will meet all your needs including drum packing, air filtration, explosion proof, one touch operation, and much more. The DC7000-10 Diesel is the result of the past 25 years of being in the drum recycling/disposal business.

The DC7000-10 Diesel is a dual purpose machine. It can be used to compact waste inside of the drum or to crush the empty drum itself. The Model DC7000-10 Diesel will crush a 55 gallon drum down to 3" in height, greatly reducing storage space requirements and transport fees. The unit comes complete with fused electrical controls, hydraulic door safety switch, and an oil sight gauge with temperature indicator. Heavy duty construction, all structural components are made with steel.

Designed, developed and assembled in the USA: All parts and components that go into the equipment are designed and developed meeting all American standards.

Standard Features

- 10 HP Diesel Motor
- Crushing force 70,000 pounds at 2500 psi
- Crushing force 85,000 pounds at 3000 psi
- Crush 55 gallon steel drum down to 2.5"
- Cycle time of 30 seconds
- 60 gallon hydraulic tank
- Compacting inside of drums using a second plate and 15" clear chamber
- Drip Pan for Liquid Containment
- Directional Control Valve
- Drum ring locator, keep the drum aligned
- Emergency stop push button and motor starter
- Portability with Fork Lift Truck
- 12 Volt Battery (Included)
- Safety features to comply with OSHA
- Heavy Duty Steel construction

Available Options

- Chamber enlarged for crushing 85 gallon drum
- Dutch Door: This is a door that can open from the top and remain closed on the bottom for packing purposes
- Fluid collection reservoir 30 gallons: Under the crushing chamber to collect any fluids inadvertently not removed prior to crushing the drum



- Automatic drum ejection system: For ejecting the crushed drum out of the chamber
- Automatic drum conveyor system: For moving the crushed drums to a dumpster or external container
- Vent Fan: Heavy-duty Vents Fan. Custom & Std. sizes available
- Hepa Filter: This type of air filter can remove at least 99.97% of airborne particles 0.3 micrometers (µm) in diameter
- Galvanized Finish: Protective coating of zinc to provide corrosion resistance

We provide the largest selection of drum crushers & drum crushers-compactors in order to meet any special project requirements. Commercial & industrial performance, electric, gasoline & diesel motors, in-plant & portable models.

DC5000-5 Electric



DC5000-10 Electric



DC5000-11 Gasoline



DC5000-10 Diesel



DC6000-11 Gasoline

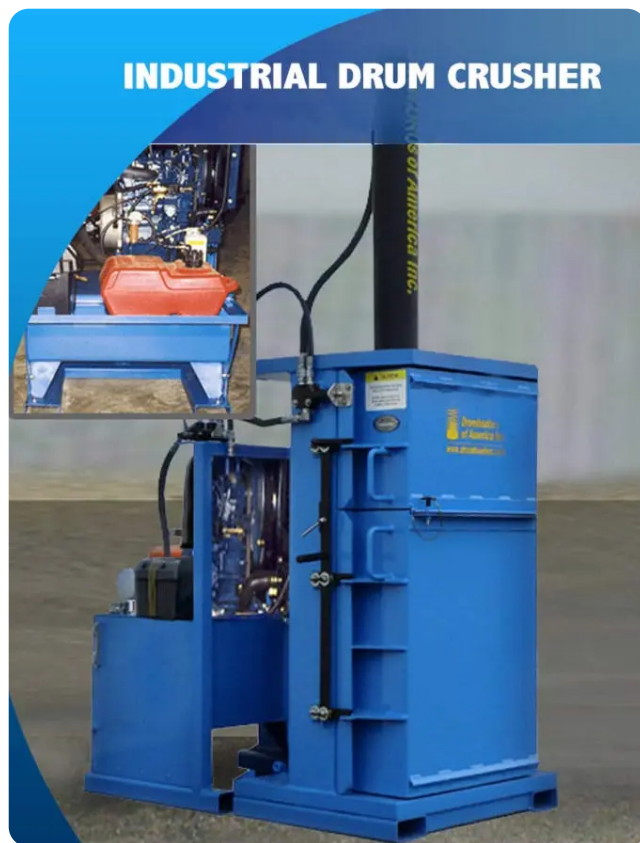


DC7000-10 Electric



DC7000-10 Diesel

DC8000-20 Diesel



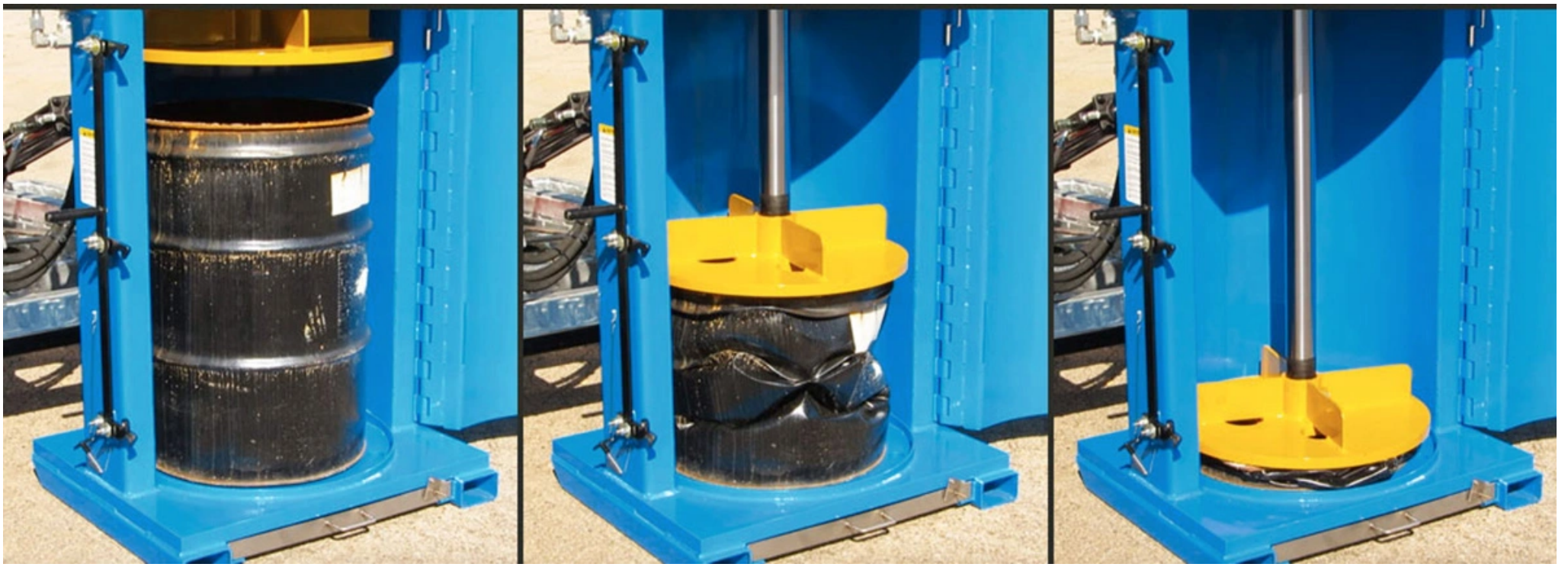
What is the difference between a Commercial and Industrial Drum Crushers?

Commercial Drum Crushers (DC5000 & DC6000 Models): These models can crush up several hundred drums in a day down to 2.5 to 3" depending on the gauge steel of the drum. Commercial drum crushers are the most standard drum crushers in the market. All drum crushers from the competition fit under this classification. Our Drum Crusher DC5000 & DC6000 Models are heavy duty systems and the best selling drum crushers around the world.

Industrial Drum Crushers (DC7000 & DC8000 Models): These model drum crushers can crush drums and/or pack drums on a continuous basis. Many of Drumbeaters of America, Inc. clients have crushed up to 1400 + drums that run facilities 24 hours. Industrial drum crushers models have the options to enlarge the chamber allowing to crush 110 gallon salvage or overpak drums as well as compacting waste inside of the drums. Our Industrial Drum Crushers DC7000 & DC8000 Models are super heavy duty systems and the only "limitless" drum crushers in the market.

Drum Crushers - Frequently Asked Questions (FAQ)





Helping Our Environment

Drumbeaters of America specializes in the engineering and manufacturing of systems for industrial companies to reduce the volume of waste products generated in manufacturing and to transform the waste products so they can be recycled.

Improving Quality

Drumbeaters is staffed with mechanical and electrical engineers with international standards experience. Our final assembly is performed at the Drumbeaters of America facility located in Elburn, Illinois, USA.

Industry Standards

Our clients include Fortune 500 manufacturers, U.S. military installations, governmental agencies, global companies and waste remediation contractors. Our equipment and systems have been shipped worldwide.



Environmental Engineering

DRUMBEATERS OF AMERICA INC.

215 WEST NEBRASKA ST. ELBURN, IL 60119 USA PHONE: (630)365.5527 FAX: (630)365.9928
WWW.DRUMBEATERS.COM